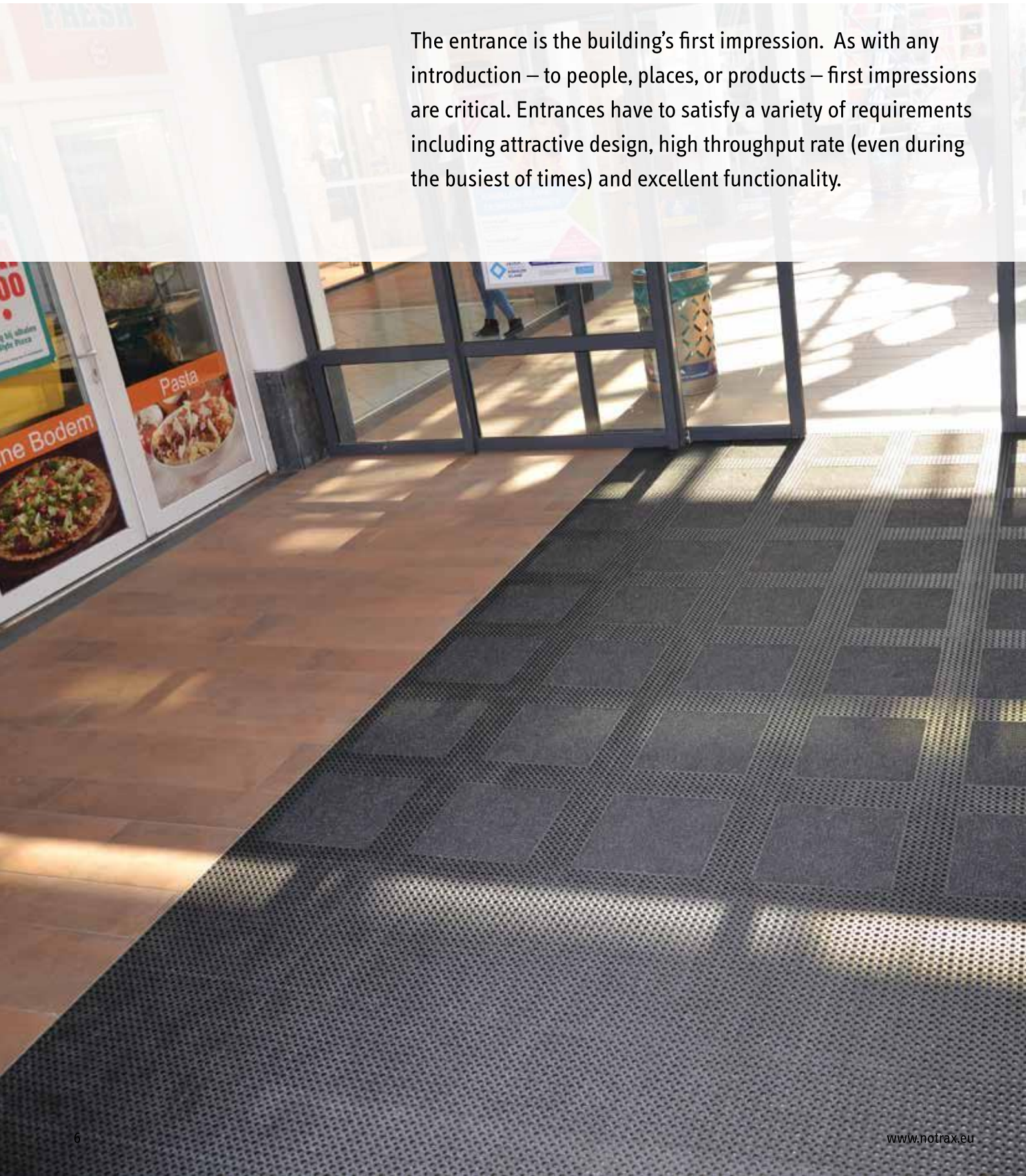


Benefits of Entrance Mats

The entrance is the building's first impression. As with any introduction – to people, places, or products – first impressions are critical. Entrances have to satisfy a variety of requirements including attractive design, high throughput rate (even during the busiest of times) and excellent functionality.



The benefits of entrance mats have been recognized by many sustainable and environmental building assessors, such as LEED (Leadership in Energy and Environmental Design) and BREEAM (Building Research Establishment Environmental Assessment Method).

Entrance mats reduce cleaning costs

70-80% of the dust, dirt and grime in public buildings is tracked in from the outside and spread throughout floors (International Sanitary Supply Association). Over a 20-day period, 1000 people can walk in 9.6 kilograms (24 pounds) of dirt into a building (ISSA). Twelve times as much dirt is tracked in during wet weather conditions based on field tests conducted by BST Laboratory over an 11-month period.

Entrance mats contribute to improved indoor air quality

Indoor air pollution is one of the top five environmental risks to public health as indoor air is found to be up to 70 times more polluted than outdoor air (Environmental Protection Agency) and most people spend 60-90% of their time indoors. (American Lung Association). Controlling the concentration of particulates through prevention and cleaning can help relieve symptoms and prevent disease. Outside dirt can cause breathing problems, allergies and aggravate asthma.

Entrance mats protect and preserve interior flooring

Constant tracking of dirt into the building is also a prime factor in the wearing of interior floors and carpeting. Dirt and soils have a texture that is similar to a razor which are ground into floors during walking, causing scraping on smooth flooring and as carpets are walked on, their fibres can be frayed.

Within the first 6 feet, 42% of the floor's finish or carpet nap will be removed after only 1500 people have entered. Entrance mats absorb much of the initial abuse to extend the life of interior flooring.

Entrance mats help to prevent slips, trips and falls

Wet, slippery floors are dangerous. Entrance matting also reduces the risk of slips and falls. The absorbing function of mats dries shoes to prevent slipping. Entrance matting can absorb up to 5 litres of water per square meter to ensure that shoes are dried properly to avoid slips and falls on wet floors. Rubber or vinyl backing that is moisture resistant and slip resistant prevents the mat from shifting to prevent sliding, tripping or falls even further.

The Zones

Matting solutions that are successful in stopping dirt and preventing slips and falls, address three major zones:

